

www.indiratrade.com



MONDAY

CURRENCY COMMODITIES

**WEEKLY REPORT
22 OCT TO 26 OCT 2018**

EDGE



INDIRA SECURITIES PVT. LTD.



WEEKLY INDICES CHANGES

INDEX	CLOSE	PREV. CLOSE	Change (%)
SENSEX	34315.63	34733.58	-1.20%
NIFTY	10303.5	10472.5	-1.61%
DOW	25444.3	25340	0.41%
NASDAQ	7449.03	7496.89	-0.64%
FTSE	7049.8	6995.91	0.77%
NIKKEI	22536	22389.5	0.65%
DAX	11553.8	11523.8	0.26%
CAC	5084.66	5095.98	-0.22%

Market Round Up:

- U.S. Stocks Gain on Earnings; Bonds, Dollar Drop: Markets Wrap: - U.S. stocks rebounded from Thursday's sell-off as the latest batch of earnings provided evidence of corporate strength. The dollar and Treasuries fell on signs of easing trade tensions with China.
- Forex - U.S. Dollar Falls as Euro, Bond Yields Rise: - The U.S. dollar was lower on Friday as bond yields continued to hold near a one-week high, while the euro was higher.
- The dollar dropped for the first time in the three days and the 10-year treasury yield rose to 3.20 percent amid reports President Xi Jinping and President Donald Trump tentatively agreed to meet on the sidelines of the G-20 summit in November, helping to cool trade war tensions. Italian bonds continued to slide amid the country's budget crisis.
- Elsewhere, European shares edged higher, while China's stock rout eased even after disappointing economic-growth data that adds to pressure on the country's leadership. Oil rose to \$69 a barrel.

RBI REFRANCE RATE

INDEX	CLOSE	PREV. CLOSE
USDINR	73.4354	73.7967
EURINR	84.1741	85.5545
JPYINR	65.2700	65.6700
GBPINR	95.6525	97.6537

FII FIGURES

DATE	FII FIGURES IN CRORE
15/10	68
16/10	-1165
17/10	140
18/10	0
19/10	-618
NET	-1575

DII FIGURES

DATE	DII FIGURES IN CRORE
15/10	294
16/10	1059
17/10	-343
18/10	0
19/10	-2.14
NET	+1007



DOLLAR INDEX CHART



1. **RSI:** 58.05
2. **ADX:** Indicating Sideways signal
3. **Stochastic Oscillator:** indicating Sideways signal
4. **ATR:** 1.1870ss
5. **Moving averages:** Pair is trading above 50 and Below 100 Day simple moving averages..

USDINR TECHNICAL CHART (INDIAN RUPEE)



- 1) **RSI:** 81.64
- 2) **ADX:** Indicating positive signal
- 3) **Stochastic Oscillator:** indicating positive signal
- 4) **ATR:** 0.9035
- 5) **Moving averages :** Pair is trading above 50 and 100 Day simple moving averages..



DOMESTIC CURRENCY

Domestic	S2	S1	PIVOT	R1	R2
USDINR	71.98	72.37	72.71	73.11	73.45
EURINR	93.57	94.29	95.35	96.07	97.13
GBPINR	63.73	64.02	64.49	64.78	65.25
JPYINR	71.98	72.37	72.71	73.11	73.45

GLOBAL CURRENCY

Global	S2	S1	PIVOT	R1	R2
DOLLAR INDEX	93.26	94.19	94.78	95.71	96.3
EURUSD	111.86	112.55	112.99	113.68	114.12
GBPUSD	1.29	1.3	1.31	1.31	1.33
USDJPY	1.15	1.15	1.17	1.18	1.19

CURRENCY PERFORMANCE

CURRENCY	CLOSE PRICE	DAY	WEEK	MONTHLY	YEARLY
EURO	1.15128	0.00%	-0.55%	-2.00%	-1.99%
POUND	1.30712	0.01%	-0.59%	-0.04%	-0.94%
AUSTRALIAN DOLLAR	0.71085	-0.16%	-0.29%	-2.29%	-8.91%
NEWZEALAND DOLLAR	0.65921	0.00%	0.67%	-0.75%	-5.32%
YEN	112.58	0.04%	0.74%	0.08%	-0.74%
YUAN	6.93627	0.05%	0.22%	1.01%	4.54%
SWISS FRANC	0.99631	0.00%	0.96%	3.29%	1.17%
CANADIAN DOLLAR	1.30953	-0.01%	0.81%	1.08%	3.52%
MEXICAN PESO	19.2514	-0.03%	2.22%	1.49%	0.93%
INDIAN RUPEE	73.37	-0.20%	-0.31%	1.89%	12.85%
BRAZILIAN REAL	3.7108	-0.09%	-1.90%	-8.97%	14.62%
RUSSIAN RUBBLE	65.565	0.16%	-0.71%	-1.15%	14.07%
DOLLAR INDEX	95.67	-0.04%	0.64%	1.57%	1.85%
KORREAN WON	1130.94	-0.02%	0.06%	1.33%	0.10%
SOUTH AFRICAN RAND	14.3747	-0.25%	0.07%	0.10%	4.90%
SINGAPORE DOLLAR	1.37706	-0.02%	0.05%	0.85%	1.13%
HONGKONG DOLLAR	7.84117	0.00%	0.08%	0.36%	0.52%

COMMODITIES

FUNDAMENTAL OF COMMODITIES

MAJOR COMMODITIES

MCX ENERGY WEEKLY

Commodity	S2	S1	Pivot	R1	R2
Crude oil- Sep	4965.7	5104.3	5349.7	5488.3	5733.7
Natural Gas-Sep	219.4	226.8	238.8	246.2	258.2

MCX BASE METAL WEEKLY

Commodity	S2	S1	Pivot	R1	R2
Copper-Nov	440.3	449.9	457.2	466.8	474.1
Zinc- Sep	187.5	192.6	198.4	203.5	209.2
Lead- Sep	134.0	143.1	148.9	158.0	163.9
Nickel- Sep	891.9	912.4	937.8	958.3	983.7

PRECIOUS METAL WEEKLY

Commodity	S2	S1	Pivot	R1	R2
Gold-Oct	30875.3	31360.7	31687.3	32172.7	32499.3
Silver-Dec	38020.7	38469.3	38784.7	39233.3	39548.7

International Commodity	S2	S1	Pivot	R1	R2	CMP	PREV CLOSE
Gold COMEX	\$1,168.67	\$1,195.33	\$1,212.67	\$1,239.33	\$1,256.67	\$1,230.00	\$1,222.00
SILVER COMEX	14.07	14.35	14.55	14.83	15.03	14.6	14.64
NYMEX CRUDE	67.61	69.47	72.38	74.24	77.15	68.65	71.34
BRENT CRUDE	75.48	77.96	81.7	84.18	87.92	79.34	80.43

Updates:

- Oil Prices Rise Ahead of Rig Count, WTI Set for Weekly Drop on Supply Concerns: - Oil prices bounced higher on Friday after two sessions of sharp declines sparked by a large build in U.S. crude inventories, while investors looked ahead to the latest reading on U.S. drilling activity.
- Gold Prices Flat as Dollar Struggles for Direction: - Gold prices were flat on Friday as the U.S. dollar was volatile despite expectations of another interest rate increase this year and falling equities. Rising interest rates are likely remaining a concern for gold prices. Interest rate increases dampen appeal for gold, while boosting the dollar.
- Natural Gas Price Fundamental Daily Forecast – Pressured by Slight Shift in Weather Forecast, Neutral EIA Report: - Natural gas futures finished lower on Thursday as weekly government storage data fell largely in line with trader expectations despite reports of strong



COMMODITIES

MAJOR COMMODITIES

Commodity Major	Price	Day	Weekly	Monthly	Yearly
Crude Oil	69.4178	-0.13%	-3.29%	-3.11%	33.75%
Brent	79.9531	-0.13%	-1.02%	0.07%	39.36%
Natural gas	3.2084	-1.48%	-1.04%	5.61%	7.27%
Gold	1225.45	0.11%	-0.08%	2.26%	-4.38%
Silver	14.6415	0.34%	-0.05%	2.93%	-14.10%
Platinum	834.5	0.54%	-0.51%	1.27%	-9.39%
Palladium	1090.7	0.94%	0.66%	2.99%	13.73%
Copper	2.7877	0.30%	0.26%	-1.00%	-12.17%
Lead	1975	-0.30%	-4.52%	-0.83%	-20.71%
Aluminum	2003	-0.50%	-0.84%	-1.14%	-6.23%
Tin	19170	0.76%	-0.54%	1.59%	-2.07%
Zinc	2626	-2.14%	0.77%	7.89%	-15.26%



MCX GOLD CHART



Commodity	S2	S1	Pivot	R1	R2
Gold	30875.3	31360.7	31687.3	32172.7	32499.3

GOLD TECHNICAL INDICATOR	
RSI(14)	BUY
STOCH(9,6)	BUY
STOCHRSI(14)	BUY
MACD(12,26)	BUY
ADX(14)	SELL
Williams %R	BUY
CCI(14)	BUY
Highs/Lows(14)	BUY
Ultimate Oscillator	BUY
ROC	BUY
BUY	8
SELL	1
NEUTRAL	0
SUMMARY	STRONG BULLISH

GOLD INTERNATIONAL CHART



Commodity	S2	S1	Pivot	R1	R2
Gold	\$1,168.7	\$1,195.3	\$1,212.7	\$1,239.3	\$1,256.7

GOLD INTERNATIONAL TECHNICAL INDICATOR	
RSI(14)	SELL
STOCH(9,6)	BUY
STOCHRSI(14)	BUY
MACD(12,26)	BUY
ADX(14)	BUY
Williams %R	NETURAL
CCI(14)	BUY
Highs/Lows(14)	BUY
Ultimate Oscillator	BUY
ROC	BUY
BUY	7
SELL	1
NEUTRAL	1
SUMMARY	STRONG BULLISH



MCX SILVER CHART



Commodity	S2	S1	Pivot	R1	R2
Silver	38020.7	38469.3	38784.7	39233.3	39548.7

SILVER TECHNICAL INDICATOR	
RSI(14)	BUY
STOCH(9,6)	SELL
STOCHRSI(14)	SELL
MACD(12,26)	BUY
ADX(14)	SELL
Williams %R	BUY
CCI(14)	BUY
Highs/Lows(14)	BUY
Ultimate Oscillator	BUY
ROC	BUY
BUY	6
SELL	3
NEUTRAL	0
SUMMARY	MILD BULLISH

SILVER INTERNATIONAL CHART



Commodity	S2	S1	Pivot	R1	R2
Silver	\$14.1	\$14.4	\$14.6	\$14.8	\$15.0

SILVER INTERNATIONAL TECHNICAL INDICATOR	
RSI(14)	SELL
STOCH(9,6)	SELL
STOCHRSI(14)	SELL
MACD(12,26)	BUY
ADX(14)	SELL
Williams %R	NETURAL
CCI(14)	SELL
Highs/Lows(14)	BUY
Ultimate Oscillator	BUY
ROC	SELL
BUY	3
SELL	6
NEUTRAL	1
SUMMARY	STRONG BEARISH



MCX COPPER CHART



Commodity	S2	S1	Pivot	R1	R2
Copper	440.3	449.9	457.2	466.8	474.1

COPPER TECHNICAL INDICATOR

RSI(14)	BUY
STOCH(9,6)	SELL
STOCHRSI(14)	SELL
MACD(12,26)	BUY
ADX(14)	SELL
Williams %R	NETURAL
CCI(14)	BUY
Highs/Lows(14)	BUY
Ultimate Oscillator	BUY
ROC	BUY
BUY	5
SELL	3
NEUTRAL	1
SUMMARY	NETURAL

COPPER INTERNATIONAL CHART



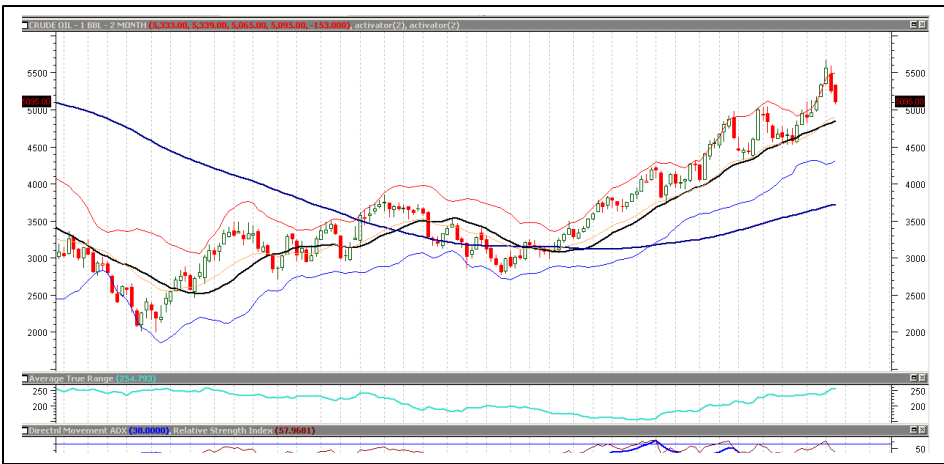
Commodity	S2	S1	Pivot	R1	R2
Copper	\$2.7	\$2.7	\$2.8	\$2.9	\$2.9

COPPER INTERNATIONAL TECHNICAL INDICATOR

RSI(14)	SELL
STOCH(9,6)	SELL
STOCHRSI(14)	SELL
MACD(12,26)	BUY
ADX(14)	SELL
Williams %R	NETURAL
CCI(14)	BUY
Highs/Lows(14)	BUY
Ultimate Oscillator	BUY
ROC	SELL
BUY	4
SELL	5
NEUTRAL	1
SUMMARY	MILD BEARISH



MCX CRUDE CHART

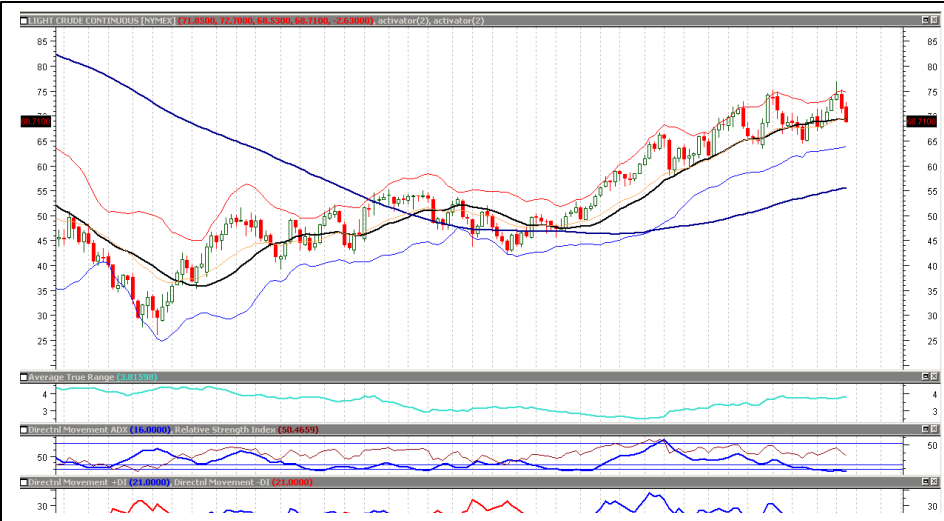


Commodity	S2	S1	Pivot	R1	R2
Crude oil	4965.7	5104.3	5349.7	5488.3	5733.7

BRENT CRUDE OIL TECHNICAL INDICATOR

RSI(14)	BUY
STOCH(9,6)	SELL
STOCHRSI(14)	SELL
MACD(12,26)	BUY
ADX(14)	BUY
Williams %R	NETURAL
CCI(14)	BUY
Highs/Lows(14)	BUY
Ultimate Oscillator	SELL
ROC	BUY
BUY	5
SELL	3
NEUTRAL	1
SUMMARY	MILD BULLISH

NYMEX CRUDE CHART



Commodity	S2	S1	Pivot	R1	R2
Crude oil	\$67.6	\$69.5	\$72.4	\$74.2	\$77.2

CRUDE.OILNYM TECHNICAL INDICATOR

RSI(14)	BUY
STOCH(9,6)	SELL
STOCHRSI(14)	SELL
MACD(12,26)	BUY
ADX(14)	SELL
Williams %R	NETURAL
CCI(14)	BUY
Highs/Lows(14)	BUY
Ultimate Oscillator	SELL
ROC	SELL
BUY	4
SELL	5
NEUTRAL	1
SUMMARY	NETURAL



MCX NATURAL GAS



Commodity	S2	S1	Pivot	R1	R2
Natural Gas	219.4	226.8	238.8	246.2	258.2

NATURALGAS TECHNICAL INDICATOR	
RSI(14)	BUY
STOCH(9,6)	SELL
STOCHRSI(14)	SELL
MACD(12,26)	BUY
ADX(14)	BUY
Williams %R	NETURAL
CCI(14)	BUY
Highs/Lows(14)	BUY
Ultimate Oscillator	BUY
ROC	BUY
BUY	6
SELL	2
NEUTRAL	1
SUMMARY	MILD BULLISH

NATURAL GAS INTERNATIONAL



Commodity	S2	S1	Pivot	R1	R2
Natural Gas	\$3.0	\$3.1	\$3.2	\$3.3	\$3.5

NATURAL GAS INTER. TECHNICAL INDICATOR	
RSI(14)	BUY
STOCH(9,6)	BUY
STOCHRSI(14)	BUY
MACD(12,26)	BUY
ADX(14)	SELL
Williams %R	NETURAL
CCI(14)	BUY
Highs/Lows(14)	BUY
Ultimate Oscillator	SELL
ROC	BUY
BUY	6
SELL	2
NEUTRAL	1
SUMMARY	STRONG BULLISH

IMP ECONOMIC DATA TO WATCH FOR THE WEEK

DATE	TIME	CURRENCY	ECONOMIC DATA	FORECAST	PREVIOUS
MonOct 22					
TueOct 23	4:00pm	GBP	MPC Member Haldane Speaks		
	8:50pm	GBP	BOE Gov Carney Speaks		
	11:00pm	USD	FOMC Member Bostic Speaks		
WedOct 24	12:45pm	EUR	French Flash Manufacturing PMI	52.4	52.5
		EUR	French Flash Services PMI	54.7	54.8
	1:00pm	EUR	German Flash Manufacturing PMI	53.5	53.7
		EUR	German Flash Services PMI	55.5	55.9
	1:30pm	EUR	Flash Manufacturing PMI	53.1	53.2
		EUR	Flash Services PMI	54.5	54.7
	8:00pm	USD	Crude Oil Inventories		6.5M
	10:30pm	USD	FOMC Member Bostic Speaks		
	10:40pm	USD	FOMC Member Mester Speaks		
ThuOct 25	12:30pm	EUR	Spanish Unemployment Rate	14.90%	15.30%
	1:30pm	EUR	German Ifo Business Climate	103.2	103.7
	5:15pm	EUR	Main Refinancing Rate	0.00%	0.00%
	6:00pm	EUR	ECB Press Conference		
		USD	Core Durable Goods Orders m/m	0.30%	0.00%
		USD	Durable Goods Orders m/m	-1.10%	4.40%
	9:45pm	USD	FOMC Member Clarida Speaks		
FriOct 26	6:30am	USD	FOMC Member Mester Speaks		
	6:00pm	USD	Advance GDP q/q	3.30%	4.20%
		USD	Advance GDP Price Index q/q	2.30%	3.00%
	7:30pm	EUR	ECB President Draghi Speaks		
		USD	Revised UoM Consumer Sentiment	99.2	99



204 Amardarshan Building 3rd floor Saket Nagar , Indore-452018

Call: 0731-4797170-173 Mob: +91-9303172345 / Toll Free: 18001030059 / SMS: <INDIRA> to 56070

DISCLAIMER

This report is for private circulation within the Indira Group. This report is strictly confidential and for information of the selected recipient only and may not be altered in any way, transmitted to, copied or distributed, in part or in whole, to any other person or to the media or reproduced in any form. This report should not be construed as an offer or solicitation to buy or sell any securities or any interest in securities. It does not constitute a personal recommendation or take into account the particular investment objectives, financial situations, or any such factor. The information, opinions estimates and forecasts contained here have been obtained from, or are based upon, sources we believe to be reliable, but no representation of warranty, express or implied, is made by us to their accuracy or completeness. Opinions expressed are our current opinions as of our current opinions as of the data appearing on this material only and are subject to change without notice.

DESIGNED BY: JUGGERNAUT DESIGNERS 98260 79355